

THURSDAY NOVEMBER 15, 2012 11:00 AM TO 1:30 PM

THE WESTIN ST. FRANCIS HOTEL 335 Powell Street, San Francisco, CA

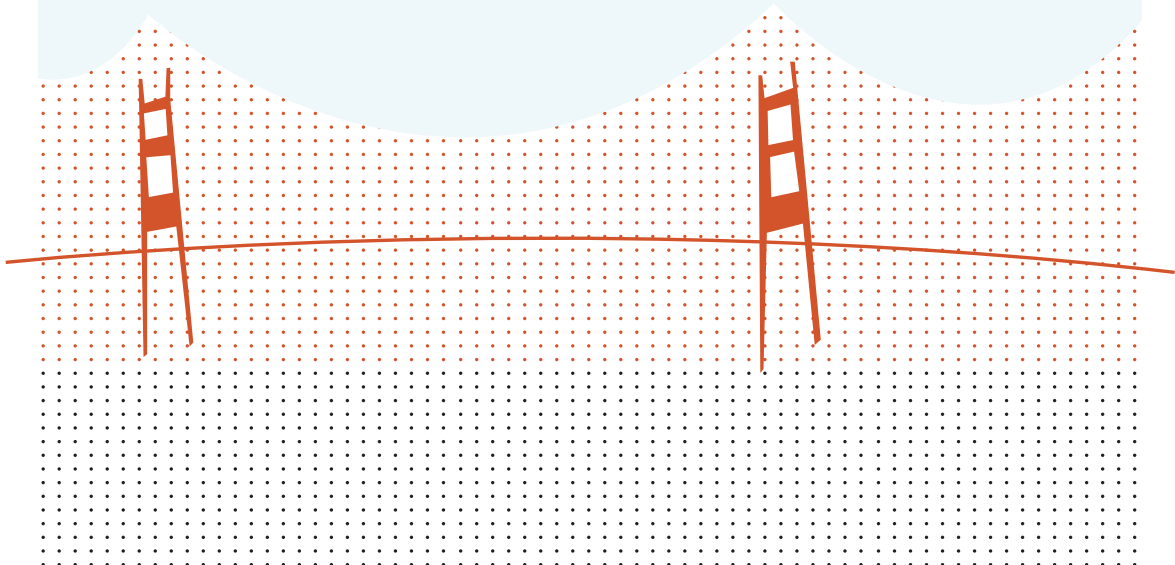
CHANGE THE WORLD



WITH A GIVING HEART

National Philanthropy Day[®]

PROGRAM



Together, we are making a difference

PG&E applauds the Association of Fundraising Professionals Golden Gate Chapter and all of today's honorees. We commend all those who are dedicated to helping others.



"PG&E" refers to Pacific Gas and Electric Company, a subsidiary of PG&E Corporation. ©2012 Pacific Gas and Electric Company. All rights reserved.

WELCOME TO

National Philanthropy Day 2012

November 15, 2012

SANDRA DREW & MICHAEL L. EDELL

EVENT CO-CHAIRS



Dear Friends of Philanthropy,

The Golden Gate Chapter of the Association of Fundraising Professionals celebrates National Philanthropy Day® by honoring Bay Area individuals, organizations and businesses that dedicate their time and resources to change lives for the better. As you hear their stories, please recognize and honor your own contributions of time, talent and treasure to our local non-profit organizations. These groups deliver myriad services that enrich our lives every day. We are fortunate to live in an area where generosity is deeply embedded in our history and culture.

Thank you for joining us. As you leave this celebration, please carry with you the spirit of giving that we honor today. And consider yourselves heroes for all that you do to make our community a better place for all of us.

With gratitude,

Sandra P. Drew *Michael L. Edell*

Sandy and Michael

DANA KING

Master of Ceremonies

Dana King has been a News Anchor at CBS 5 since 1997. She co-anchors the CBS 5 Eyewitness News at 6 pm, 10 pm (on The CW 44 Cable 12) and 11 pm.



King has travelled extensively for the station, and her work is a shining example of the impact reporting with integrity has on communities both near and far. Her incredible work includes being the first Bay Area broadcast journalist at Ground Zero after 9/11, extensive coverage in Iraq, Afghanistan, Rwanda, Honduras, and Turkey.

When she documented the situation of refugees in Albania and Kosovo, she met up with two Bay Area doctors who were there to provide medical relief to Kosovo refugees. King said, "I told my children I can't help like a doctor can, but I can tell someone's story to make things better."

Her efforts in Honduras in 1998 after Hurricane Mitch led CBS and the Bay Area Chapter of the American Red Cross to open a phone bank that raised close to a million dollars.

King received a local Emmy Award for her reporting in Honduras. She is also the recipient of four other Emmy Awards for local news in Los Angeles, St. Louis, and San Francisco. In 2010 her special on the "Legacy of Loma Prieta" was honored as the top Special News Program by the Northern California RTNDA.

The Hertz FOUNDATION
freedom to innovate

GRADUATE FELLOWSHIPS FOR INNOVATORS IN THE PHYSICAL, BIOLOGICAL & ENGINEERING SCIENCES

THE GRADUATE FELLOWSHIP Celebrates 50 YEARS

HERTZFOUNDATION.ORG

TODAY'S SCHEDULE

THURSDAY, NOVEMBER 15

10:00 AM PHILANTHROPY FORUM *Colonial Room*

11:00 AM REGISTRATION *Georgian Room*

11:00 AM WELCOME RECEPTION *Colonial Room*

12:00 PM LUNCHEON AND PROGRAM *Grand Ballroom*

Welcome — Dana King, Master of Ceremonies

Opening Remarks, Sandra Drew and Michael L. Edell
National Philanthropy Day Co-Chairs

In Tribute Presentation
Fiddle Waltz by Nancy Vail, Co-Founder of Pie Ranch



Let's celebrate

By partnering for the common good we can achieve uncommon results. We proudly sponsor the 2012 AFP Golden Gate Chapter's National Philanthropy Day awards luncheon.



chase.com

© 2012 JPMorgan Chase & Co.

12:30 AWARDS PRESENTATION

Outstanding Foundation or Community Grantmaker
Tipping Point Community

PRESENTED BY CAROL BONNIE, BOARD OF TRUSTEES, CPMC FOUNDATION

Hank Rosso Outstanding Fundraising Professional
Lori Fogarty

ANITA MARTINEZ, BOARD MEMBER, OAKLAND MUSEUM OF CALIFORNIA & PAM COOK, PAMELA COOK DEVELOPMENT SEARCH

Outstanding Corporate Grantmaker
JP Morgan Chase & Co.

PRESENTED BY STEPHANIE MARTIN, DIRECTOR OF COMMUNITY RELATIONS, PG&E

Lifetime Achievement in Philanthropy
Helen Diller

PRESENTED BY PHYLLIS COOK, PLC PHILANTHROPIC SERVICES

SPOTLIGHT ON OUR HONOREES

Outstanding Philanthropist
Maurice Kanbar

PRESENTED BY BERNARD OSHER, FOUNDER AND TREASURER OF THE BERNARD OSHER FOUNDATION

Presentation by San Francisco Girls Chorus
Level IV of the Chorus School

Outstanding Fundraising Volunteer
Carla Betts

PRESENTED BY DR. JOEL PARROTT, PRESIDENT AND CEO OF THE OAKLAND ZOO

Outstanding Foundation Professional
Retha Robinson

PRESENTED BY SANDRA HERNANDEZ, CEO, SAN FRANCISCO FOUNDATION AND KURT ORGANISTA, SAN FRANCISCO FOUNDATION BOARD OF TRUSTEES AND KOSHLAND COMMITTEE CHAIR

Vineyards Award

Kristi Yamaguchi's Always Dream Foundation

PRESENTED BY DR. GABRIELLE MILLER, NATIONAL EXECUTIVE DIRECTOR, RAISING A READER

HOST COMMITTEE

Event Co-Chairs

Sandy Drew
Michael L. Edell

Many thanks to the tireless work of our all-volunteer committee. National Philanthropy Day would not be possible without your generosity of time and talent.

In Tribute Committee

Christopher Shields,
CHAIR
Shields Capital Development

Pamela A. Cook
Pamela Cook Development Search

Ronnie de Supinski
Prospect Research Services

Janet Lipsey
*Personal Organization
& Office Support Services*

Theresa Nelson
*Theresa Nelson & Associates /
Strategies for Nonprofits and the
Public Sector*

Naomi Sultana Young
The Story of Stuff Project

Jane Willner
Willner Prospect Research Services

Audrey L. Yee
*Golden Gate National Parks
Conservancy*

Trudy Zimmerman
CONSULTANT
Prospect Research

Awards Committee

Andrew Kaufteil
CHAIR
*University of California, San
Francisco*

Emma Lee Twitchell
CO-CHAIR
CFRE, Oakland Zoo

Bridget Anderson

Lishelle Blakemore
UC Berkeley

Tom DeCaigny
San Francisco Arts Commission

Cynthia Brandt Stover
Mills College

Caitlin Croughan
*California Pacific Medical
Center Foundation*

Matt Forman
Evelyn & Walter Haas, Jr. Fund

Nicole Medeiros
Equal Justice Society

Giles Miller
East Bay Community Foundation

Dee Dee Nguyen
Marin Community Foundation

Mary M. Schmidt
FireHorse Nonprofit Development

Audrey Yee
*Golden Gate National Parks
Conservancy*

Sponsorship Committee

Rebecca Schuett
CHAIR
*California Academy
of Sciences*

Sama Abu Ayyash
*Arts Management and Fundraising
Consultant*

Betsy Biern
*Children's Hospital & Research
Center Foundation*

Sterrin Bird
CFRE
The Hamlin School

Andy Bowles
La Clínica de La Raza

Y'Anad Burrell
Glass House Communications

Joanne Butcher
Fund Development Consulting, Inc.

Susan Corlett
Sustainable Conservation

Sandy Drew
NPD 2012 Co-Chair

Suzanne Irwin-Wells
Irwin-Wells Associates

Anita Jaffe
*Special Events and Partnership
Marketing Consultant*

Andrew Kaufteil
*University of California, San
Francisco*

Robin Morjikian
NCIRE
*The Veterans Health Research
Institute*

Julia Russell
Bay Area Discovery Museum

Scott Staub
*ACFRE Friends of the
San Francisco Public Library*

Brandy Vause
Bay Area Discovery Museum

Lily Yuan
*University of California, San
Francisco*



ABOUT THE ASSOCIATION OF FUNDRAISING PROFESSIONALS

Founded in 1971, AFP Golden Gate Chapter works to make the Bay Area nonprofit community stronger by providing professional development opportunities for fundraising professionals. With close to 400 active members, it is one of the largest AFP chapters in the nation. AFP-GGC is deeply grateful for the generous contributions from Bay Area foundations, corporations, and individuals that make its education programs possible.

Not yet a member? Join AFP in November and we'll give you \$50 off the cost of an annual membership in honor of National Philanthropy Day. Please see your gift bag for membership materials and a \$50 coupon.

SPONSORS

Presenting Sponsor



Media Sponsor



Community Partners

charles SCHWAB



**Friends and Family of
Helen Diller**

UCSF Helen Diller Family
Comprehensive
Cancer Center



THE CHRONICLE OF
PHILANTHROPY



Community Supporters

Asian Art Museum
California Academy of Sciences
The Hamlin School
Pamela Cook Development Search
San Francisco Zoo

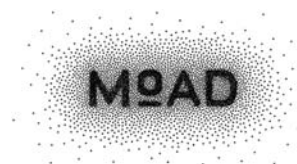
Special Thanks



Table Sponsors

Alameda County Health Care Foundation	Mal Warwick Associates Donordigital
American Conservatory Theater	Mercy Housing California
Ann Otter's Family & Friends	Netzel Grigsby Associates, Inc.
Bay Area Discovery Museum	NCIRE – The Veterans Health Research Institute
Betts' Family and Friends	Oakland Children's Hospital & Research Center Foundation
Brakeley Briscoe Inc.	Oakland Museum of California
California Academy of Sciences	Oakland Museum Women's Board
Children's Fairyland	Oakland Zoo
CuriOdyssey at Coyote Point	Rotary Club of Oakland
Drew Family	San Francisco General Hospital Foundation
East Bay Community Foundation	Shartsis Friese LLP
Essex & Drake Fund Raising Counsel	SusCon
FireHorse Nonprofit Development	The Daphne Greene Wilkins Family
George Marks Children's House	The Koshland Program at The San Francisco Foundation
Golden Gate National Parks Conservancy	The Men's Wearhouse
Irwin-Wells Associates	The San Francisco Foundation
Klein & Roth Consulting	The Women's Foundation of California
KQED	Theresa Nelson & Associates
Kristi Yamaguchi's Always Dream Foundation	United Way of the Bay Area
Leyna Bernstein Consulting	
Lincoln Child Center	

In Kind Sponsors





ModiCares

Excited to lend a helping hand for the
second straight year!
Congratulations, Awardees!

Enjoy **25% off** at modifywatches.com with code **NPD2012**.

Expires Saturday, 11/24

AWARDEES

Each year the Association of Fundraising Professionals Golden Gate Chapter marks one day to celebrate the spirit of giving by recognizing exemplars in philanthropy and social change. Awards are presented to individuals and institutions whose giving to the community inspires all of us. They are nominated by the community and selected by a committee of volunteers who are leaders in the world of philanthropy. We are pleased to honor the following 2012 award recipients.



OUTSTANDING FOUNDATION OR COMMUNITY GRANTMAKER

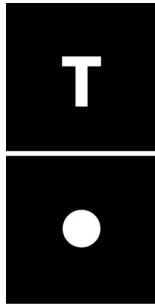
The Outstanding Foundation or Community Grantmaker Award recognizes a private or community foundation or community grantmaking organization that provides financial support, inspiration, encouragement and motivation to nonprofits and grantmakers alike – as well as developing innovative approaches to philanthropy.

TIPPING POINT COMMUNITY

PRESENTED BY CAROL BONNIE, BOARD OF TRUSTEES, CPMC FOUNDATION

Since 2005, Tipping Point Community has raised more than \$50 million to educate, employ, house and support 160,000 Bay Area people in need.

Tipping Point screens nonprofits rigorously to find, fund and partner with the most effective groups helping low-income people achieve self-sufficiency. We currently fund 38 organizations vetted for strong leadership, clean financials and a commitment to measuring results. Tipping Point grants are unrestricted, allowing grantees to invest in the strategy, operations and staffing required to best serve their clients.



**TIPPING
POINT
COMMUNITY**

Beyond dollars, Tipping Point provides grantees with the communications, technical and strategic support they need to grow and increase their impact. We are unapologetically focused on metrics because getting results means breaking the cycle of poverty for good. We believe that our grantees deserve a funding model that respects their expertise, and that our donors deserve a return on their philanthropic investments.

Our board underwrites all fundraising and operating costs so that 100% of every dollar donated to Tipping Point goes directly to the best poverty-fighting groups in the Bay Area. We have no endowment. Each year we start our fundraising efforts from zero and everything we raise goes out the door within 12 months.

HANK ROSSO OUTSTANDING FUNDRAISING PROFESSIONAL

The Hank Rosso Outstanding Fundraising Professional Award honors an individual fundraising professional who practices his or her profession in an exemplary manner.

LORI FOGARTY

PRESENTED BY, ANITA MARTINEZ, BOARD MEMBER, OAKLAND MUSEUM OF CALIFORNIA & PAM COOK, PAMELA COOK DEVELOPMENT SEARCH

Lori Fogarty is the Director and CEO of the Oakland Museum of California, a multidisciplinary museum that brings together collections of art, history and natural sciences to tell the extraordinary stories of California and its people. Since 2006, Lori has worked to oversee and guide all Museum programmatic and administrative operations and has transitioned OMCA from a public/private cultural institution supported by the City of Oakland and the Oakland Museum of California Foundation to an independent non-profit organization with an innovative new organizational structure. Lori also



led the Museum's \$63 million "Museum of California" campaign and building renovation project, which has included the reinstatement of 90,000 square feet of gallery space as well as the first major enhancement to the Museum's landmark building. Prior to her current position, Lori was executive director of the Bay Area Discovery Museum and was senior deputy director of the San Francisco Museum of Modern Art. Lori began her career in fundraising in several positions at The Music Center of Los Angeles and served in development roles for seven years at SFMOMA.

OUTSTANDING CORPORATE GRANTMAKER

The Outstanding Philanthropist Award is presented to an individual or family with a record of exceptional generosity who, through direct financial support, has demonstrated outstanding civic and charitable responsibility, and who encourages others to take philanthropic leadership roles in their communities.

JP MORGAN CHASE & CO.

PRESENTED BY STEPHANIE MARTIN, DIRECTOR OF COMMUNITY RELATIONS, PG&E

JPMorgan Chase & Co. (NYSE:JPM) is a leading global financial services firm with assets of \$2.3 trillion and operations worldwide. The firm is a leader in investment banking, financial services for consumers and small businesses, commercial banking, financial transaction processing, asset management and private equity. A component of the Dow Jones Industrial Average, JPMorgan Chase & Co. serves millions of consumers in the United States and many of the world's most prominent corporate, institutional and government clients under its J.P. Morgan and Chase brands. In California, more than 14.5



million customers and small businesses are served through more than 950 bank branches, 4,000 ATMs, credit cards, mortgage offices, and online and mobile banking as well as through relationships with auto dealerships. The company employs nearly 21,000 people in the state and contributed nearly \$66 million in grants and in-kind donations to local charities and non-profits across California in 2011. Information about JPMorgan Chase & Co. is available at www.jpmorganchase.com.

LIFETIME ACHIEVEMENT IN PHILANTHROPY

Lifetime Achievement in Philanthropy. The award honors an individual or family with a proven lifetime record of exceptional generosity who, through direct financial support, demonstrates outstanding civic and charitable responsibility and whose generosity encourages others to take philanthropic leadership roles on in the community.

HELEN DILLER

PRESENTED BY PHYLLIS COOK, PLC PHILANTHROPIC SERVICES

A native San Franciscan, Helen currently resides on the Peninsula with her husband Sanford. Helen's philosophy is quite simply that it is never too early, too late, or too often to make the world a better place. She believes in scientific research and education and with the Helen Diller Comprehensive Cancer Center, together with UCSF, hopes to see a new era in cancer discovery. She is committed to inspiring others to make a difference in their communities, and set out to achieve this with broad based philanthropic grants and programs investing in education at all levels. Her work includes:

- The Diller Teen Fellows Program, a national initiative to promote teen leadership through community service, ethics and identity-building, now in its 15th year and in 16 communities (throughout US and Israel).
- The Diller Tikkun Olum Awards, now in its 6th year; and expanded nationally, an annual award that recognizes teens for their exceptional community service and outstanding leadership.

- The Helen Diller Preschool at the Jewish Community Center in San Francisco.

- The Helen Diller Family Teacher Awards, an annual award to top educators in their field, now its 12th year.



- The Helen Diller Programs in Jewish Studies at UC Berkeley and UC Santa Cruz
- Helen Diller Family Building for the Humanities at Ben Gurion University
- Commitment to families with the renovation of the playgrounds in Dolores Park; and Julius Kahn Park

- Bay Area co-sponsorship for the Wexner Heritage Program

Helen served as the Northwestern President of the American Friends of Hebrew University of Jerusalem for five years, and as the Bay Area Chairman for the American Committee for Weizmann Institute of Science for four years years. In 1995, Helen received the Hebrew University's Scopus Award.

Helen has three children, and seven grandchildren.

OUTSTANDING PHILANTHROPIST

The Outstanding Philanthropist Award is presented to an individual or family with a record of exceptional generosity who, through direct financial support, has demonstrated outstanding civic and charitable responsibility, and who encourages others to take philanthropic leadership roles in their communities.

MAURICE KANBAR

PRESENTED BY BERNARD OSHER, FOUNDER AND TREASURER OF THE BERNARD OSHER FOUNDATION

Focusing the bulk of his charitable giving on health care, education, and the arts, Maurice Kanbar's generosity has made possible numerous programs and services that touch the lives of thousands of people every year. His gifts helped launch the Kanbar Cardiac Center at California Pacific Medical Center, which uses highly advanced technology to diagnose heart disease, treat patients with irregular heartbeats and open blocked blood vessels. In addition, he has been an ardent supporter of the medical center's Program in Medicine & Human Values, one of the first medical ethics programs in the country to bring difficult end-of-life discussions to the patient's bedside. In the arts, he has made



possible some of the best live performances in San Francisco by funding venues such as the Kanbar Performance Arts Center; home to the San Francisco Girls Chorus. Aspiring filmmakers also benefit from his generous support of both the San Francisco Film Society and KQED public television. In the field of education, his charitable spirit reaches across the country and has made an indelible impact on institutions such as Philadelphia University, New York University, and Cooper Union. An outstanding college for architecture, art and engineering, Cooper accepts applicants based solely on merit and awards full scholarships to all students.

OUTSTANDING FUNDRAISING VOLUNTEER

The Outstanding Fundraising Volunteer Award is presented to an individual who has demonstrated exceptional leadership skills in coordinating groups of volunteers for major fundraising projects of more than one nonprofit organization. The recipient should demonstrate exceptional skills coordinating and inspiring groups of volunteers for fundraising projects that benefit charitable institutions and show a commitment to the advancement of philanthropy.

CARLA BETTS

PRESENTED BY, DR. JOEL PARROTT, PRESIDENT AND CEO OF THE OAKLAND ZOO

Carla Civiello Betts was born in San Francisco where she lived with her parents, Bill and Ruth, and her brother Brad. She attended Abraham Lincoln High School and then moved to the East Bay where she attended and graduated from the University of California at Berkeley. Carla received her teaching credential and taught kindergarten in both Martinez and Alameda while living in Oakland. She met her husband-, Ken, a local businessman and they married and had a darling daughter, Kelley.



Carla's volunteerism began in Berkeley during her college years and then continued on in Oakland during her teaching career and raising their daughter. The East Bay community was her focus during the years to follow and in to the present day. She is involved with Lincoln Child Center, the Rotary Club of Oakland where she was their first woman president, the Lake Merritt Breakfast Club, Children's Fairyland, the Potomac Association where she is presently chairman of the Board of Governors, the White Elephant Sale which benefits the Oakland Museum of California and the Oakland Zoo's Walk in the Wild.

OUTSTANDING FOUNDATION PROFESSIONAL

The Outstanding Foundation Professional Award honors a foundation professional who individually initiates or supports creative nonprofit efforts and who works to develop philanthropic partnerships with organizations and communities. This will be a professional whose individual contributions to nonprofit/foundation philanthropic teamwork is exceptionally effective or unique.

RETHA ROBINSON

PRESENTED BY SANDRA HERNANDEZ, CEO, SAN FRANCISCO FOUNDATION & KURT ORGANISTA, SAN FRANCISCO FOUNDATION BOARD OF TRUSTEES AND KOSHLAND COMMITTEE CHAIR

Retha Robinson has been the Director of the Koshland Program of The San Francisco Foundation for the past 12 years. The Koshland Program is a neighborhood leadership program that is working toward promoting civic unity and leadership development, encouraging civic participation, developing neighborhood partnerships and celebrating unsung community heroes. Through her work with the Program, Retha has witnessed its evolution and pioneered some of its lasting innovations.

Retha has been with the Foundation for three decades, working primarily in community building efforts throughout Bay Area neighborhoods. Before working with the Koshland Program, she felt a strong affinity to the central values of the program and watched it take shape at The San Francisco Foundation. She was drawn to working with community leaders and the direct engagement within the neighborhoods.



Retha understands her role as director only goes as deep as her roots in the community. She was born and raised in San Francisco, and she is motivated by her memories of growing up on a block where neighbors looked out for one another. She wants to reinvigorate that sense of community in the Koshland neighborhoods.

Retha is a board member of the Northern California Grantmakers, a member of Bay Area Blacks in Philanthropy, Asian Americans and Pacific Islanders in Philanthropy, Hispanics in Philanthropy, The Association of Black Foundation Executives, and Neighborhood Funders Group; and an advisory Board Member of the Bay Area Women and Children's Resource Center.

VINEYARDS AWARD

The Vineyards Award celebrates an organization having less than \$500,000 in private support but which is nonetheless effectively addressing serious community problems. This is a visionary group that, through passionate staff commitment and the innovative use of volunteers and/or community partnerships, is an inspirational model for other nonprofits, philanthropic organizations and individuals.

ALWAYS DREAM FOUNDATION

PRESENTED BY DR. GABRIELLE MILLER, NATIONAL EXECUTIVE DIRECTOR, RAISING A READER

Created in 1996, The Always Dream Foundation was the expression of Kristi Yamaguchi's desire to create an organization whose sole purpose would be to inspire and embrace the hopes and dreams of children. The motto "Always Dream" has served as her personal inspiration for many years. It serves as a constant reminder to dream big, never lose sight of your goals, and "always" strive to become a better person. From its modest beginnings as a community collaboration with the United Way of the Bay Area, the Foundation has steadily grown into a mature and independent 501c(3) Public Charity serving California, Nevada and Hawaii. In order to support its projects and funding activities, the Foundation produces several special events on an annual basis. Additional income is generated from the development of corporate partnerships, allocation of endorsements and appearance fees, and individual contributions.



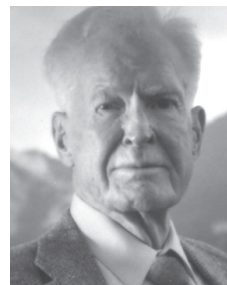
The Always Dream Foundation strives to find innovative ways to support a diverse range of programs designed to inspire and embrace the hopes and dreams of children.

Special consideration has been given to those organizations or programs that address the needs of children living in economically or socially disadvantaged environments, and to those confronting the challenges of physical disabilities.

The Foundation has provided close to \$1,000,000 in grants to organizations serving children and families. Though traditionally a funding organization, the Foundation recently (January 2010) completed its most ambitious project to date- Always Dream Play Park. Designed and built in partnership with the City of Fremont, California, the structures, activities, and playground environment are designed to embrace the needs of all children, including those with a range of physical, developmental or sensory disabilities.

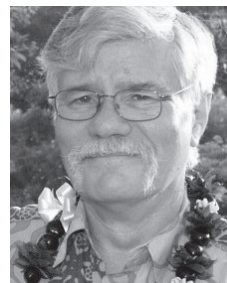
IN TRIBUTE

We Remember the donors, volunteers, nonprofit and foundation staff who passed away between September 1, 2011 and September 1, 2012. The following individuals represent the many who contributed to the Bay Area philanthropic community. These individuals truly did change the world with a giving heart.



**ARTHUR
BONWELL
(1927-2012)**

Arthur "Art" Bonwell's love of the outdoors blossomed as a child on long bike rides in his native Indiana. An avid cyclist into adulthood, Mr. Bonwell co-founded Save Mount Diablo in 1971 to focus attention on the threat of development to California's largest state park and the Bay Area's tallest peak. He lived to see the group grow from volunteer-run to a paid staff of twelve, and serve as an instrumental force in the preservation of East Bay parklands. When Art co-founded Save Mount Diablo, the 3,849-foot mountain encompassed some 6,788 acres. Since then, the group has been instrumental in preserving 110,000 acres as open space in more than 40 parks in the East Bay. Art was also closely associated with the Concord Historical Society, where he served as a member of the Board of Directors from 1996-2009.



**KIMO
CAMPBELL
(1947-2012)**

Raised in Hawaii, Kimo Campbell came to Northern California in 1966. An active student leader and winner of the Marin Independent Journal's award for outstanding student journalism in 1967, he attended the College of Marin and UC Berkeley. Mr. Campbell was elected to the Marin Community College Board for four terms in the 1970s and '80s. A philanthropist and activist, he supported numerous community groups over the years through his foundation, the Pohaku Fund, a donor-advised fund of the San Francisco-based Tides Foundation, focusing on environmental protection, civil rights, and Hawaiian sovereignty. Mr. Campbell served on

various boards, including the California League of Conservation Voters, the Northern California Community Loan Fund, the Sierra Club Legal Defense Fund (now Earthjustice), and the Trust for Public Land. He was also an active supporter of progressive political candidates across the country.



**DONALD
DAVENPORT
(1936-2012)**

Donald "Little Cloud" Davenport, originally from Michigan, earned his masters degree at the University of Michigan and was a founder of the Midwest Association of Housing Cooperatives. He moved to Oakland in 1976 and in 1980 helped facilitate the creation of the San Antonio Community Development Corporation, where he served as Executive Director for more than 20 years. In 1992, to honor his Seminole/Muskogee Creek/Chickasaw and Sudanese heritage, Don helped found the Black Native American Association, sponsoring a pow-wow in September 2010. Little Cloud was the recipient of many awards, including the San Francisco Foundation's Daniel E. Koshland Civic Unity award in 1997 for his community service in Oakland. In recent years, he also served on the boards of Oakland Community Action Partnership and the Pacific Chapter of the National Neuropathy Association.



**PATRICIA
DUNN
(1953-2011)**

Patricia C. "Pattie" Dunn led Barclays Global Investors from 1996 to 2002, having joined the firm's predecessor in 1976. Ms. Dunn became president in 1974, co-chairman in 1996, and global CEO in 1998.

Ms. Dunn was on the board of directors at Hewlett-Packard. She was a board member of the San Francisco Symphony, the Ohana Foundation in Kona, Hawaii, the Larkin Street Youth Services, and the Rock Center for Corporate Governance at Stanford University. Patricia Dunn was a member of the UCSF Foundation board of directors, the Medical Center Executive Council, the Campaign for UCSF Medical Center Cabinet, and the Friends of the Breast Care Center. At UCSF, she and her husband supported the Ruth M. Dunn Endowed Chair in Minimally Invasive Surgery, the Campaign for UCSF Medical Center, Breast Care Studies, and the Chancellor's Annual Fund-Sandler Challenge.



MORTIMER FLEISHHACKER (1932-2011)

Mortimer Fleishhacker III was most passionate about upholding his long-standing family tradition

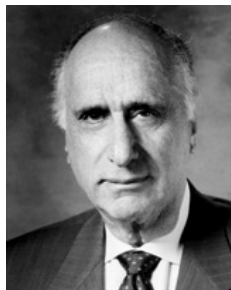
of serving their community. He built on that legacy through his support of San Francisco's American Conservatory Theater, the Greenbelt Alliance, SPUR, San Francisco Jewish Family Services Agency, Big Brothers, the Guardsmen, and The San Francisco Development Fund. Mr. Fleishhacker led the restoration of the A.C.T.'s Geary Theater following the Loma Prieta earthquake. While Mr. Fleishhacker served as President of Temple Emanuel, he led the campaign to rebuild its historic structure. In the past few years, he was instrumental in securing historical recognition and in the preservation of "Green Gables," the family estate in Woodside. He was a member of The Fleishhacker Foundation Board of Directors for more than half a century, following in the footsteps of his father and grandfather.



F. WARREN HELLMAN (1934-2011)

F. Warren Hellman, a pioneer in the private equity business, was a noted philanthropist with interests in a wide

variety of local causes. He was a Chairman and Trustee Emeritus of the San Francisco Foundation, and a supporter of St. Anthony's Foundation, Golden Gate Park, and the San Francisco Free Clinic. He was also active at his alma mater UC Berkeley, where he was on the Advisory Board of the Haas School of Business and a trustee of the UC Berkeley Foundation. Other organizations that benefited from his attention were the Jewish Community Federation, the Jewish Community Endowment Fund, The Bay Citizen, and the Brookings Institution. His deep love of bluegrass music caused him to found and sponsor the Hardly Strictly Bluegrass music festival in Golden Gate Park, in which Speedway Meadow has been renamed Hellman's Hollow in his honor.



STANLEY HERZSTEIN (1921-2012)

Stanley Herzstein was a community leader in San Francisco and a long-time member of the

board of the Koret Foundation. Mr. Herzstein was appointed to the Koret Foundation board by Joseph Koret, with whom he worked at Koret for more than 30 years, starting as a stock-boy and ultimately serving as president of the men's division. He also served on the boards of the Jewish Home of San Francisco, the Market Street Development Association, the American Committee for Shaare Medical Center, and the Jewish Community Federation in San Francisco. Mr. Herzstein's son, Stan, said of his father, "When he got involved with an organization, he didn't just kick up his feet. He wanted action."



DIANA & HARRY HIND

Diana (1918-2011)

Harry (1915-2012)

Harry W. Hind, a brilliant pharmacist and entrepreneur, invented and entrepreneur, invented solutions for eyes and contact lenses and the Lido-derm® patch, which relieves the pain of shingles. With his UCSF School of Pharmacy classmate, Clifford Barnes, and their professor Frank Goyan, PhD, Mr. Hind developed a meter to measure the pH of biological solutions, including tears, in a direct, standardized way. Mr. Hind and his wife Diana Vernon Hind were strong supporters of the UCSF School of Pharmacy and the California Academy of Sciences. They endowed the first two distinguished professorships at the UCSF School of Pharmacy; one supports drug discovery and the other supports medical device development. Harry Hind also supported the Fine Arts Museums of San Francisco and the Jack O'Neill Sea Odyssey Program. He served as director of the Sempervirens Foundation Fund. Diana Hind, who preceded her husband in death in 2011, was an artist and storyteller who attracted a wide circle of friends with her energy and enthusiasm.



BARBARA KLINEHOPPER (1927-2012)

Barbara Kline Hopper's early interest in flowers led her to study botany at UCLA, where

she pursued botany and biology as a teacher. Sharing her insatiable interest in botany and bird watching with students, fellow professors, and friends was her life's most rewarding experience.

Beginning with membership and work in the 1960's with the Laurel Garden Club in Southern California and continuing with the Santa Rosa Garden Club, her efforts led to many club projects including a 'Touch and See Nature Trail for the Blind' in Woodland Hills, California and the Native Plant Garden at Sonoma State University. Ms. Hopper was a member of the Nature Conservancy, helping establish the initial "Docent Programs" at Jepson Prairie in Solano County. She and her husband John received awards for 25 years of volunteer service to the Strybing Botanical Garden in San Francisco.



CHARLES HUGGINS (1925-2012)

Charles "Chuck" Huggins was a devoted family man, loving husband, community leader,

gentleman, jazz aficionado, lover of nature and animals. Mr. Huggins worked for See's Candies for 55 years, including 34 years as president and CEO. He was there for births, graduations, marriages and other big occasions in employees' lives. Known for his corporate and personal philanthropy, he gave to the Family Service Agency of San Mateo County, Filoli in Woodside, Carson High School, the San Francisco Traditional Jazz Foundation, the San Francisco Jazz Festival, and the restoration of the Palace of Fine Arts in San Francisco. Mr. Huggins also supported the Marine Mammal Center in Sausalito, WildCare in San Rafael, and the State Parks Foundation.



**GRAHAM LEGGAT
(1960-2011)**

Graham Leggat was executive director of the San Francisco Film Society.

Upon becoming executive director in 2005, Leggat immediately designed a strategy that enhanced the Film Society's reputation with both filmmakers and audiences and produced remarkable results, tripling the organization's annual budget and staff. Leggat's leadership transformed the Film Society from a producer of the San Francisco International Film Festival into a year-round cultural institution with an increasingly national impact across all program areas: exhibition, education, and filmmaker services. His vision, leadership, passion, work ethic, tenacity, imagination, and daring indelibly marked the organization and left it in the best shape—artistically, organizationally and financially—in its 54-year history. Before heading the San Francisco Film Society, Leggat held positions at the American Museum of the Moving Image, New York's Museum of Modern Art, and the Film Society of Lincoln Center.



**MAY LOUIE
(1924-2012)**

May Louie was a prominent San Francisco businesswoman who built a gift shop empire in Chinatown. At

the same time, because of her position as a Grant Avenue business owner, she became an activist and philanthropist, protesting the demolition of a freeway to the neighborhood, establishing a cancer support group, and donating millions of dollars to local causes. She founded the Chinatown Merchants Association, and later helped begin Chinatown's annual

Moon Festival to draw more crowds to the area. She later established the Robert Louie Family Cancer Support Center in memory of her son, and even after retirement continued to support community organizations such as the Chinatown YMCA, Chinese for Affirmative Action, St. Mary's School, and the Chinese Catholic Center. Although ultimately unsuccessful, her work opposing the demolition of the Embarcadero Freeway had earned her the respect of her community.



**ELAINE MCKEON
(1925-2012)**

Elaine McKeon became a trustee of the San Francisco Museum of Modern Art in 1986, later serving

as board president, chairwoman, and chairwoman emeritus. She was known for her optimism, sunny disposition, and motherly nature as she helped shepherd the institution through pivotal moments in its history. These included a change of locale, several executive changes, and the expansion of its collections and of the building itself. Her commitment to financial discipline helped to ensure SFMOMA's stability through economic downturns. She oversaw planning that resulted in the construction of the Koret Visitor Education Center, the growth of the museum's gift store, and the creation of the museum store at San Francisco International Airport. She was gracious, compassionate, and friendly, working behind the scenes with staff, and knowing the names of every security guard. Her style was "leadership by enthusiasm."



**MADELINE MCLAUGHLIN
(1923-2012)**

Madeline "Maddie" McLaughlin of Walnut Creek returned to law school after raising two children.

Ms. McLaughlin served as Regent of John F. Kennedy Law School, where she taught in the evenings, and was Executive Vice President of the Alameda-Contra Costa Chapter of Hastings Law Alumni Association. Ms. McLaughlin operated the Contra Costa Senior Free Wills Clinic to assist low-income senior citizens. Active in her community, she served as president of the Lindsay Wildlife Museum, chair of public relations for John Muir Hospital Auxiliary, publicity chair for the Walnut Creek Children's Hospital Medical Center; and member of the Contra Costa County Republican Central Committee. An honorary life member of the National Congress of PTA, Ms. McLaughlin was president of Parkmead and Walnut Creek Elementary PTA.



**BETTY NAVARRETE
(1932-2012)**

Betty Navarrete had a profound influence on the Bay Area Latino community. A non-English

speaking immigrant more than 50 years ago, she was driven to ensure that new arrivals had the support, skills, and knowledge they needed to thrive as fully engaged and contributing members of society. In the 1970s, she began social work with the Girl Scouts of America, recruiting young Latina women and girls to the scouting program – ironic since she had no daughters, only sons. Betty worked for 24 years at Arriba Juntos, a social services agency that particularly helps new immigrants. She was crucial in establishing its on-the-job

training programs and English language classes. Betty was deeply involved in the community of St. Anne of the Sunset, initially as a mother of children attending that school, and later as a very active member of the parish.



**SIBYL ANN OTTER
(1935-2011)**

Sibyl Ann Otter dedicated herself professionally and personally to philanthropy and community service.

She was Belvedere's Citizen of the Year in 1998, having served twice as mayor and two terms on the City Council. As chair of the San Francisco Conservatory of Music's board, Mrs. Otter led the fundraising for its current Civic Center home. She chaired the United Way of the Bay Area, the American Red Cross Bay Area Chapter, and Marin General Hospital's operating board. Mrs. Otter helped lead the Fine Arts Museums of San Francisco, Oregon Shakespeare Festival, Belvedere-Tiburon Library Agency, the Junior League of San Francisco, and Marin General Hospital Foundation. She was a major gifts director at the San Francisco Ballet. Mrs. Otter and her husband Dick were founding members of the Yosemite Fund; she served on the board of its successor, the Yosemite Conservancy.



MARION SANDLER (1930-2012)

Marion O. Sandler, a businesswoman and philanthropist, was among the first women CEOs of a

Fortune 500 company, Golden West Financial, established with her husband, Herb. They contributed to the University of California, San Francisco for neurosciences facilities and research; the Program for Breakthrough Biological Research; and the Sandler Asthma Basic Research Center. The Sandlers established ProPublica, a Pulitzer Prize-winning investigative journalism newsroom and they helped start the Center for Responsible Lending, a program that protects home ownership. Additionally they established the Human Rights Center and the Center for Equitable Growth at UC Berkeley, along with supporting many other organizations. Marion served on many non-profit boards and on advisory boards of the business schools at UC Berkeley and New York University. Having committed to give away all of their wealth philanthropically, the Sandlers participated in the Giving Pledge initiative.



DONALD SEILER (1928-2012)

Donald H. Seiler, a Silicon Valley CPA and longtime Jewish community activist, believed deeply in giving back to the

community. More importantly, he educated many others to be philanthropic. Don served as president of the San Francisco-based Jewish Community Federation, served as board member and president of Congregation Beth Am in Los Altos Hills, and served on the board of the Jewish Home of San Francisco. Don was passionate about construction of the Taube

Koret Campus for Jewish Life in Palo Alto. He served on its board in 2003, helping to see that project completed. His good works extended beyond the Jewish community. He established the Donald H. and Ruth F. Seiler Chair in Public Accounting Chair at UC Berkeley's Haas School of Business and served on the boards of the Peninsula Community Foundation and the Stanford University Medical Center.



FRANCES STRAUSS (1918-2012)

Frances C. Strauss was a doyenne fundraiser for the ACLU of Northern California for over fifty years.

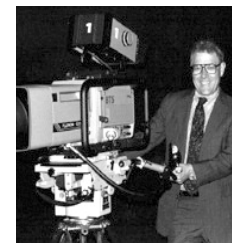
She began working with the ACLU in Chicago. When Ms. Strauss and her husband, sociologist Anselm Strauss, moved to San Francisco, her first project here was to establish the Complaint Desk. She helped to reorganize the chapter and launched the first Bill of Rights Day Celebration in 1975, raising an unprecedented \$23,000. In 1989, Ms. Strauss was honored with the Lola Hanzel Advocacy Award. She served on almost every board committee, helped design and implement the major gifts campaign, and worked on the 2010 Campaign for the Future, raising \$26 million. The Development Department wing in the new ACLU-NC building was named for her in honor of her 90th birthday. Ms. Strauss strongly supported other civil liberties organizations, UCSF, and numerous arts organizations



MASAKO SUZUKI (1921-2012)

Masako 'Martha' Suzuki consistently supported the Asian Art Museum and many Japanese-

American organizations and programs. Because of her early experiences in a Japanese Internment camp, she was passionate about fostering positive relations between Japanese and American cultures, generously funding exhibitions and programs that enhanced the knowledge and understanding between the two cultures. Martha, with her sister Tomoye Takahashi, founded and directed the Takahashi Foundation. It has been instrumental in the growth of the Japanese department at the museum, where the Tea Room bears her name. In 2010, she received the Order of the Rising Sun, Gold and Silver Rays from the Government of Japan for her contribution toward improving U.S. - Japan relations. This is the highest honor conferred upon Japanese foreign nationals. The museum honored her and the Foundation as an outstanding philanthropist at National Philanthropy Day in 2010.



ANTHONY TIANO (1940-2012)

Anthony Tiano served as the President of KQED Inc. from 1979 to 1993. Tiano later

served as President of Santa Fe Productions, a company that produced independent programming for public television stations nationwide. Tiano led KQED through a period of significant growth and change including the institution of a full 7-day a week schedule for KQED Public Television and the conversion of KQED Public Radio to an all news and public affairs format. He ushered in new programming, including "This Week in Northern California" on televi-

sion and "Forum" on radio, both of which remain among KQED's most popular offerings. In 1989, Tiano worked with legendary promoter Bill Graham to broadcast an Earthquake Relief Concert that raised more than \$2 million dollars for victims of the Loma Prieta Earthquake.



DAPHNE WILKINS (1929-2012)

Daphne Dibble Greene Wilkins translated her passions for many causes into significant accomplish-

ments. She was the first female chair of the Graduate Theological Union, in Berkeley, and remained a trustee emerita. She led the effort to fund, design, and build the GTU's Flora Lamson Hewlett Library. A strong believer in the need to preserve public access to parks, Mrs. Wilkins was appointed to the original Advisory Commission to the Golden Gate National Recreation Area and Point Reyes National Seashore, on which she served for twenty years. She served on the boards of Grace Cathedral, San Francisco Conservatory of Music, the Hastings Center, and Point Reyes Bird Observatory as an active fundraiser. The National Society of Fundraising Executives recognized her in 1991. Queen Elizabeth II knighted Mrs. Wilkins as a member of the Order of Saint John for her community service.

SPECIAL PERFORMANCE

San Francisco Girls Chorus

Level IV of the Chorus School

ELIZABETH AVAKIAN, DIRECTOR SF GIRLS CHORUS

Founded in 1978, the San Francisco Girls Chorus has become a regional center for choral music education and performance for girls and young women ages 7-18. More than 300 singers from 160 schools in 44 Bay Area cities participate in this internationally recognized program, deemed "a model in the country for training girls' voices" by the California Arts Council.

The Chorus School offers a program of unparalleled excellence, designed to take young girls from their first introduction to the art of choral singing through a full course of choral/vocal instruction. The comprehensive music education includes the study and development of choral artistry, vocal technique, music theory, music history, and performing style. The discipline, teamwork, and concentration young girls learn in the Chorus School rehearsals and performances instill in them the values necessary for high achievement in music and in life.

Level IV of the Chorus School is an ensemble of approximately 45 girls ages 10-15, which performs at events and self produced concerts around the Bay Area.



is proud to support National Philanthropy Day 2012.

We salute all of this year's outstanding honorees!

***A Leader in Providing Fundraising Counsel and
Planning to Not-for-Profit Organizations & Institutions***

2033 Gateway Place, Suite 500 • San Jose, CA 95110
www.netzelgrigsby.com • 408.451.9906

TURNING DREAMS INTO REALITY®

SPIRIT OF PHILANTHROPY

*Congratulations to our many table honorees who are being honored today
with the Spirit of Philanthropy Awards!*





Honoree
THE ARC
Sponsor
THE DREW FAMILY

For 60 years, The Arc San Francisco has been a leader in providing services to people with intellectual and developmental disabilities. In that time, we've become the primary resource provider for over 600 adults living with Downs syndrome, autism, cerebral palsy, and other disabilities. Our purpose is to provide our clients with the means and supports to live safe, productive lives in our community and to enjoy the freedom and opportunities that everyone deserves. We are guided by our mission: To serve people with intellectual and developmental disabilities by promoting self-determination, dignity and quality of life through creative day programming, supported housing resources, and mentored employment opportunities.



Honoree
ALLISON BENNINGTON
Sponsor
THE HAMLIN SCHOOL

Allison has served as the Parents Association President of The Hamlin School for two years and prior to her tenure as PA President she has served Hamlin in various capacities as a volunteer, leader, ex-officio member of the Board of Trustees giving hundreds of hours of time to support the school and its mission of excellence in education for girls. The Hamlin School is honored to recognize Allison with a Spirit of Philanthropy Award as she exemplifies this spirit in the many gifts of her time, talent and treasure. Thank you Allison!



Honoree
ELWYN AND JENNIFER BERLEKAMP
Sponsor
EAST BAY COMMUNITY FOUNDATION

The philanthropic interests of Jennifer and Elwyn Berlekamp include music and education at all levels, ranging from infants through elderly. In partnership with the East Bay Community Foundation, they sponsored an annual series of fairs at which dozens of nonprofit organizations and sponsors gathered to exchange experiences and plans to improve K-12 education.



Honoree
KEN AND JACKIE BROAD
Sponsor
BAY AREA DISCOVERY MUSEUM

The Bay Area Discovery Museum honors Ken and Jackie Broad for providing the founding support to launch the Museum's most innovative education endeavor, the Center for Childhood Creativity (CCC). Ken and Jackie are dedicated to education reform and are public school advocates in the Bay Area. Professionally, Ken is a portfolio manager at Delaware Investments, a member of the Macquarie Group, and a part of their Focus Growth Team. Jackie is the author of several Mom's Choice Award winning children's books, such as *Eat Your Breakfast or Else!* and *Grandma Wants to Eat My Baby Sister!* Additionally, Jackie's commitment to education and creativity extends to her role as Annual Giving Campaign Chair at Kiddol, The Mill Valley Schools Community Foundation.



Honoree
EARTHJUSTICE
Sponsor
MAL WARWICK ASSOCIATES / DONORDIGITAL

Earthjustice is a non-profit public interest law firm dedicated to protecting the magnificent places, natural resources, and wildlife of this earth and to defending the right of all people to a healthy environment. We bring about far-reaching change by enforcing and strengthening environmental laws on behalf of hundreds of organizations and communities. Mal Warwick Associates and Donordigital are proud to honor our client Earthjustice as a Spirit of Philanthropy awardee.



Honoree
LESLIE FERGUSSON-DIETZ
Sponsor
CALIFORNIA PACIFIC MEDICAL CENTER

Leslie Ferguson-Dietz has served on the California Pacific Medical Center Foundation Board since 2002. She is currently the Secretary of the Board, Chair of the Corporate, Foundation & Corporate Giving Committee and a member of the Executive Committee. A registered nurse who received her training at St. Luke's in Saint Louis, Missouri, she also holds a Master's degree from UCSF. Her generous philanthropic gifts have helped deliver exceptional care to the thousands of babies born each year at CPMC, as well as support cancer recovery services offered by their Women's Health Resource Center.



Honoree
PHYLLIS COOK
Sponsor
FAMILY & FRIENDS OF HELEN DILLER

Phyllis Cook has been the philanthropic advisor to the Helen Diller

Family Foundation since its inception. Her incredible vision and leadership is evident in all of the programs and philanthropic works of the foundation. Phyllis has also served as the Executive Director of the Jewish Community Endowment Fund of the Jewish Community Federation of San Francisco, the Peninsula, Marin and Sonoma Counties for 25 years.



Honoree
ADELE CORVIN
Sponsor
FAMILY & FRIENDS OF HELEN DILLER

Adele Corvin brings her energy, spirit and leadership to all that she

does, including her leadership role as a board member of the Helen Diller Family Foundation. Adele leads the Diller Awards for Excellence in Education and also, since 2012, serves as Co-Chair of the Diller Tikkun Olum awards. Adele embodies the spirit of tikkun olum ("repairing the world") with her leadership in a myriad of organizations including the Jewish Community Foundation, the Jewish Home, United Way, and the American Red Cross, to name a few.



Honoree
HELEN DILLER

Sponsor
**UCSF HELEN DILER
COMPREHENSIVE
CANCER CENTER**

The UCSF Helen Diller
Family Comprehensive

Cancer Center is proud to honor Helen Diller and her family for their commitment to cancer research and care at UCSF. Their partnership and generosity enables our scientists and physicians to lead the nation in developing better methods to detect, treat, and prevent cancer.



Honoree
**FRANNIE
FLEISHHACKER**

Sponsor
**AMERICAN
CONSERVATORY
THEATER**

Françoise "Frannie" Fleishhacker is a member of the Board of Trustees at American Conservatory Theater, where she and her late husband, Mort, have been long time supporters. She sustains a three year scholarship for the M.F.A. program, and recently received the Benefactor Award at A.C.T.'s first annual Conservatory Awards Luncheon. She is an emeritus board member of That Man May See, the non-profit arm of the Department of Ophthalmology and Francis I. Proctor Foundation for Research in Ophthalmology at the University of California, San Francisco.



Honoree
ROBERT FRIEDMAN

Sponsor
**THE SAN FRANCISCO
FOUNDATION**

Bob Friedman, civic leader, visionary philanthropist, Robert (Bob)

Friedman is founder, chair of the board, and general counsel of The Corporation for Enterprise Development, a nonprofit devoted to expanding economic opportunity. A recognized leader in the field, Bob has helped lead the US development of innovative economic development strategies and deficit reduction tax reform. Koshland Committee member of The San Francisco Foundation since 2003.



Honoree
GAIL GLASSER

Sponsor
**CALIFORNIA PACIFIC
MEDICAL CENTER**

Gail Glasser served as Chair of the California Pacific Medical

Center Foundation Board from 2006-2008. She remains active with the Board, serving on the Executive, Board Development, Finance and Grants & Disbursements Committees. Her charitable contributions have supported numerous programs at CPMC, including the St. Luke's Cardiovascular Care Center. Her gifts have also helped acquire crucial medical technology for cardiac care, treatment of brain cancers and more. In addition to her involvement with CPMC Foundation, she was co-chair of the Medical Research Institute Board at Pacific Presbyterian Medical Center and is a founding member of the Vallejo Stairway Garden Project.



Honoree
JEANNE HERBERT

Sponsor
**ESSEX & DRAKE
FUND RAISING
COUNSEL**

Jeanne Herbert, Board chair of Court Appoint-

ed Special Advocates of Contra Costa County. Jeanne has worked to help create a strong and stable organization that ensures that CASA will continue to serve children for many decades to come. Jeanne has a global and a local commitment to helping children and has worked with nonprofits in Albania, Sri Lanka and Nepal.



Honoree
CYNTHIA HUNTER LANG

Sponsor
**SUSTAINABLE
CONSERVATION**

Sustainable Conservation is thrilled to honor Board Member Cynthia

Hunter Lang for her dedication to a healthy environment and economic opportunity around the world. We applaud Cynthia's leadership at Sustainable Conservation, celebrate her recent MBA in Sustainable Management, and commend her as a champion for the environment and economic development.



Honoree
**ROSE JACOBS
GIBSON**

Sponsor
**NETZEL GRIGSBY
ASSOCIATES, INC.**

As a member of the San Mateo County Board

of Supervisors, Ms. Rose Jacobs Gibson has demonstrated the true spirit of philanthropy through her generous efforts to help nonprofits establish effective partnerships with local, state and regional government in an effort to meet the needs of all residents of San Mateo County.



Honoree
JESSICA JOHNSON

Sponsor
**FAMILY & FRIENDS
OF HELEN DILLER**

In addition to managing the learning and development function

for Prometheus, Jessica brings her passion for volunteerism to the company as the Project Lead for the Promethean OutReach and Community Help Program (PORCH). She has been instrumental in expanding the PORCH volunteer program from its base team of 650 employees (who have logged in over 3,100 volunteer hours)), affectionately known as Prometheans, to include their 27,000 apartment community residents, or Neighbors.



Honoree
MAURICE KANBAR

Sponsor
**CALIFORNIA
PACIFIC MEDICAL
CENTER**

CPMC congratulates Maurice Kanbar on being named the 2012 National Philanthropy Day Outstanding Philanthropist!



Honoree
PHILLIP KILBRIDGE

Sponsor
PG&E

Pacific Gas and Electric Company is pleased to honor Phillip Kilbridge, Executive Director of Habitat for Humanity Greater San Francisco. Phil oversees the general management, strategic direction, board partnership and human capital of the organization. Prior to Habitat, Kilbridge held a number of management positions in the non-profit sector; including Executive Director of Rebuilding Together Oakland and Development Director at the Charles River Conservancy in Boston. A native of the San Francisco area, Kilbridge holds undergraduate and graduate degrees from the University of California at Davis and Colorado State University. He is also a graduate of the Coro Fellows Program and has served as a spokesperson for affordable housing, civic engagement and non-profit leadership.



Honoree
LINDA LANIER

Sponsor
CURIODYSSEY AT COYOTE POINT

We are proud to honor Linda Lanier, who has led two landmark campaigns for CuriOdyssey and is embarking on a third: the first built our native-animal wildlife habitats; the second saved the organization from closing; and the third will secure the future for this children's interactive science and nature education center.



Honoree
JOE LAYMON

Sponsor
UNITED WAY BAY AREA

Joe Laymon is vice president of Human Resources, Medical and Security for Chevron Corporation. He oversees Chevron's global human resources, medical services and security functions. Laymon is on the board of directors of Molex, Inc.; BoardRoomIQ.com; and the United Way of the Bay Area. He also is on the board of trustees of Clark Atlanta University and is a national trustee of the Boys & Girls Clubs of America.



Honoree
JENNIFER E. LEE

Sponsor
KRISTI YAMAGUCHI'S ALWAYS DREAM FOUNDATION

Jennifer Lee has dedicated her life to community service organizations in the areas of elderly advocacy, youth sports and education, Alzheimer's disease and cancer research, university scholarship fundraising, and Christian outreach programs. Jennifer has always felt the need to advocate for those in our community who cannot speak, defend and support themselves - whether due to age, mental/physical challenges, economic limitations, family complications, or other conditions placing individuals at a disadvantage in our society. She is committed to helping raise the needed funds to support those organizations focusing on youth education and aged populations, and works hands-on with children and the elderly alike in helping them attain the opportunities, quality, respect and dignity of life that they so deserve.



Honoree
JANET B. MCKINLEY

Sponsor
THE CALIFORNIA ACADEMY OF SCIENCES

Janet McKinley began her professional career in retail buying and currently owns Janet McKinley Interiors. Passionate about education, she has endowed and actively manages several undergraduate learning and development grants. In addition, she has served on the boards of Saint Luke's Hospital, San Francisco University High School and California Academy of Sciences. She is currently serving on the board of the San Francisco Film Society, San Francisco Day School and sits on the education and exhibits committee at the California Academy of Sciences.



Honoree **MUSLIM ADVOCATES**

Sponsor **KLEIN & ROTH CONSULTING**

Muslim Advocates promotes the full and meaningful participation of Muslims in American public life. In addition to their focus on legal advocacy, policy engagement and civic education, they work toward strengthening the Muslim nonprofit sector by helping donors make informed decisions about their giving to Muslim charities both in the U.S. and abroad.



Honoree
SUSAN C. OBERNDORF

Sponsor
THE CALIFORNIA ACADEMY OF SCIENCES

Susan C. Oberndorf spent six years in management at the Crocker National Bank in San Francisco. She currently serves as a Trustee of the Breakthrough Collaborative, the California Academy of Sciences, is a member of the Megan Furth Academy and serves in various volunteer roles at Stanford University. Mrs. Oberndorf has also been a member of the Junior League of San Francisco, a Trustee for the San Francisco Zoo and a Trustee for the Cathedral School for Boys.



Honoree
CARY ORR-KISSNER

Sponsor
KQED

Cary Orr-Kissner's commitment to KQED and public media is extraordinary. Her belief in the importance of KQED's work, especially KQED's news programming, has been steadfast over many years. For the past two years, her leadership of our Major Gifts Committee has helped KQED reach record breaking revenue levels from individuals. Thank you, Cary!



Honoree
JUDY PATRICK

Sponsors
**LEYNA BERNSTEIN
CONSULTING**

Judy Patrick is President and CEO of the Women's Foundation

of California. Prior to her appointment in 2008, Judy held the post of Executive Vice President of Programs for nine years. In that role, Judy led the Foundation's advocacy and policy change work, including the development of the groundbreaking Women's Policy Institute. She also worked to develop programs to strengthen grant partners' organizational capacity and to evaluate the impact of their work.

Prior to coming to the Foundation, Judy directed the work of several nonprofits. She was executive director of the San Francisco-based Women's Philharmonic and director of Girls Count, a Colorado initiative to change systems that impact girls' educational achievement and career planning. She also led Mi Casa Resource Center for Women, a Denver organization that advances self-sufficiency primarily for low-income Latinas and youth.

She has served on the faculty of the University of Colorado at Denver and Regis University, where she taught program development and evaluation. Judy has worked as a researcher and program evaluator in both the public and private sectors. She serves on numerous boards of directors.



Honoree
MARIANNE PETERSON

Sponsor
**CALIFORNIA ACADEMY
OF SCIENCES**

Marianne is a volunteer leader of many Bay Area organizations. Her

board service includes the Fine Arts Museums of San Francisco, the SF Botanical Garden at Strybing Arboretum, the San Francisco Parks Alliance, and Yosemite Conservancy. She is also a beloved and long-time supporter of the California Academy of Sciences.



Honoree
RICHARD ROSENBERG

Sponsor
**FAMILY & FRIENDS
OF HELEN DILLER**

Richard has provided incredible leadership to the many organizations

he is involved in, including his role as board member of the Helen Diller Family Foundation. He is a former Chairman and Chief Executive Officer of Bank of America. Richard served as President of the UCSF Foundation Board, and remains on the board and on the board of the UCSF Medical Center. Richard has served on the boards of the California Institute of Technology, the San Francisco United Way, and has served on numerous corporate boards, to name a few of his many leadership roles.



Honoree
**DR. BARBARA
ROSENBERG**

Sponsor
**FAMILY & FRIENDS
OF HELEN DILLER**

Barbara Rosenberg shaped the Diller Tikkun

Olum Awards become what they are today, in her role leading the awards for the first five years of the program. Barbara is passionate about education. She ensures excellence in everything she does and brought a tremendous energy and vitality to the program, bringing the families into the partnership as well. She was a long-time trustee of Brandeis University and has played leadership roles in many other organizations including for example Hebrew University, the San Francisco Jewish Home for the Aged.



Honoree
SERPICO LANDSCAPING

Sponsor
GEORGE MARKS CHILDREN'S HOUSE

Serpico Landscaping, based in Hayward but serving the entire Bay Area, provides superior landscape management service to homeowners associations, apartment complexes and businesses in the San Francisco Bay Area. They offer maintenance, irrigation, water management, enhancement and tree care services. All their employees are trained to give outstanding customer service, to respect their client's property, the environment, and using safe work practices at all times.

Supporting the community has been a hallmark of Serpico's company culture since it was founded in 1989, and in 2008, after reading an article about George Mark Children's House, Sharon Serpico Hansen had two thoughts: "How come I've never heard of this place" and "I've got to do something to help!" While writing a large check wasn't possible, she thought about what she could offer. Since then, one to two days each week when you arrive at George Mark Children's House, you will see Serpico Landscaping trucks parked in the driveway and a team of workers taking care of the beautiful five-acre grounds surrounding George Mark at no charge. And according to Ms. Serpico Hansen, "We get way more out of giving to George Mark than George Mark gets from us: George Mark Children's House salutes Serpico Landscaping for its longtime dedication and support!"



Honoree
PATRICK SMITH

Sponsor
MACY'S

Patrick Smith embodies the Spirit of Philanthropy, both personally and in his 34-year career at

Macy's. Currently involved in local organizations such as the Union Square BID and Meals on Wheels San Francisco, where he is the Chairman of the Board Emeritus, Patrick also serves on the boards of the Yerba Buena Alliance and San Francisco General Hospital. He is a founding member of San Francisco General's Heroes & Hearts Committee, which honors community heroes and curates the annual series of Hearts in San Francisco art sculptures. Patrick has been involved in Macy's Passport Presents Glamorama since the first show 30 years ago, when he volunteered to be an usher. Through the years he became an integral part of the annual HIV/AIDS fashion show fundraiser and worked closely with founding chair, legendary actress and AIDS activist Dame Elizabeth Taylor, to help bring awareness of the cause to new levels and raise over \$30 million to date. Patrick has been working to make an impact in the local community since he began his career at Macy's in 1978. He makes it a priority to leverage his personal and business relationships to further the goals of his partner non-profits and meet the needs in the communities of San Francisco and the Northwest region. Patrick divides his time between San Francisco and Palm Springs with his partner of 34 years.



Honoree
DAVID STANTON

Sponsor
SAN FRANCISCO ZOO

David Stanton serves as the Chairman of the San Francisco Zoological Society, the non-profit

that manages and supports the San Francisco Zoo. He has shepherded the Zoo through an economic recession and led several initiatives, including a recent "Wellness Campaign" to ensure first rate animal care for the Zoo's animals. He also personally funded a revised master and exhibit plan as well as seeded the Zoo's Americas Capital Campaign. Mr. Stanton has been a long-standing Board member of the San Francisco Zoological Society. He has been passionate about animals his entire life.



Honoree
PETER SZUTU

Sponsor
THERESA NELSON & ASSOCIATES

Peter went from Air Force medic to community clinician to President

and CEO of the Center for Elders' Independence, a pioneering program to help keep frail, low-income seniors at home instead of institutions. With interdisciplinary teamwork and preventive care, CEI keeps seniors more active and engaged, reduces their health care costs while improving their quality of life. We applaud Peter Szutu for his decades of commitment to elder care.



Honoree
TARGET

Sponsor
ASIAN ART MUSEUM

The Asian Art Museum is proud to honor Target

as a generous supporter of its monthly free admission days for the past ten years. Target First Free Sundays at the Asian Art Museum

enable our community to enjoy the museum and its programs free of charge. The multifaceted support of Target Corporation and its employee volunteers demonstrates Target's ongoing commitment to the arts, education, and our communities, challenging the museum to serve greater and more diverse audiences. We thank Target for the nearly 120 free days it has sponsored since the museum moved to Civic Center in 2003, and look forward to the next decade of our partnership.



Honoree
CLYDE A. THOMPSON

Sponsor
ALAMEDA COUNTY HEALTH CARE FOUNDATION

Clyde Thompson joined the Alameda County

Health Care Foundation Board in 2003 and was elected Board President in 2009. We honor Clyde for his steadfast and heartfelt dedication to promoting health, well-being and quality of life in the communities we serve, and for his incredible leadership and philanthropic support.



Honoree
ADAM WEISBURG

Sponsor
FAMILY & FRIENDS OF HELEN DILLER

Adam is committed to youth and empowering the next generation of

young leaders. As Director of the Diller Teen Initiatives, Adam's leadership encompasses the Diller Teen Fellows, an international teen leadership program, and the DillerTikkun Olum awards to recognize teens who are exceptional role models in their community. Previously, Adam served as Camp Tawonga's executive director from 2008-2011 and as Berkeley Hillel's executive director from 2000-2008.



Sheryl Wong congratulates

Director and CEO of the
Oakland Museum of California

LORI FOGARTY

OUTSTANDING FUNDRAISING PROFESSIONAL FOR 2012

A well deserved honor for an outstanding leader



CPMC Foundation salutes the inspirational and transformative philanthropy of the 2012 awardees.

cpmcf.org



*Mazel
Tov*

to Helen Diller

We proudly partner with the
**HELEN DILLER
FAMILY FOUNDATION**

in repairing the world.



www.jewishfed.org

Congratulations to
the 2012 National
Philanthropy Day
Award Recipients!

Thank you for all
you do to
*Change the World
with a Giving Heart.*



**Helping others
is always a
smart investment.**

**Charles Schwab is
proud to support
National Philanthropy Day.**



Charles Schwab & Co., Inc. All rights reserved. Member SIPC.
CSA 02453 (0207-5616) ADP 36995 (02/10)



Berkeley
proudly joins in honoring
Helen Diller
for her
outstanding leadership.

We thank Helen Diller and her family for establishing the Helen Diller Family Program in Jewish and Israel Studies. Her vision will enrich intellectual life at Berkeley for generations to come.



 **JOHN & MARCIA
GOLDMAN
FOUNDATION**
John & Marcia Goldman Foundation
Celebrate National Philanthropy Day
2012

**We are pleased to announce the
2013 National Philanthropy Day Co-Chairs**
Rebecca Schuett, California Academy of Sciences
Gwen Sobolewski, Golden Gate National Parks Conservancy



National Philanthropy Day®



**2011-2012
AFP GOLDEN GATE BOARD OF DIRECTORS**

Officers

CHAPTER PRESIDENT

Mary M. Schmidt
FireHorse Nonprofit Development

VICE PRESIDENT, PROGRAMS

Leyna Bernstein
Leyna Bernstein Consulting

VICE-PRESIDENT, MEMBERSHIP

Wendy Marinaccio
Mal Warwick Associates/Donordigital

VICE-PRESIDENT, MARKETING, COMMUNICATION & OUTREACH

Barbara Stevenson
Lumenos LLC

SECRETARY

Andrew Kaufteil
University of California, San Francisco

TREASURER

Alden Briscoe
Brakeley Briscoe, Inc.
Chair-elect, Mentoring

TREASURER-ELECT

Scott Staub, ACFRE
Friends of the San Francisco Library

PRESIDENT-ELECT

Michael L. Edell
Netzel Grigsby Associates, Inc.
Co-Chair, National Philanthropy Day

IMMEDIATE PAST PRESIDENT

David Disend
March of Dimes

Board Members

James Armstrong, CFRE
Brown Schroeder & Associates, Inc.

Sterrin Bird, CFRE
The Hamlin School

Joanne Butcher
Fund Development Consultant

Susan Carsen
Carsen Consulting Group
Vice President-Elect, Programs

Cheryl Clarke
Cheryl A. Clarke Consulting

Susan Corlett
Sustainable Conservation
Chair, Multicultural Alliance

Sandra Drew
Marts & Lundy, Inc.
Co-Chair, National Philanthropy Day

Terri Forman, CFRE
First Graduate

Linda Frank, CFRE
University of Pacific Dugoni School of Dentistry

David Madson, ACFRE
CPMC Foundation

Theresa Nelson, MBA, CFRE
Theresa Nelson & Associates

Rebecca Schuett
California Academy of Sciences

Paola Stuff
As It Develops

EVENT PRODUCTION:  **ORGANIC EVENTS**
great events for the greater good

GRAPHIC DESIGN:  **CASEY + OONA**

VIDEO PRODUCTION:  **BAYCAT**

Association of Fundraising Professionals
Golden Gate Chapter
www.afp-ggc.org | 415.404.6501

*Thank you,
outgoing Chairman of the Board
David Stanton*

Our deepest gratitude for your service
and dedication to animal wellness,
conservation and innovation.



www.sfzoo.org